



“BIG” COVERED HOPPER BARGES

RAKE AND BOX STYLE HOPPERS W/ COVERS 200' x 35'

VESSEL DETAILS

| | |
|-----------------------|---------------------|
| Flag/Port of Registry | USA / St. Louis, MO |
| Class/Classification | Inland Hopper Barge |
| GRT | 823 |
| Length Overall | 200' |

| | |
|----------------|----------------------------|
| Breadth | 35' |
| Depth | 14' (5' Coming) |
| Cargo Capacity | Rake 2165 st / Box 2291 st |

Particulars given herein are entirely without warranty as to accuracy. Interested parties must satisfy themselves by inspection of the vessel.

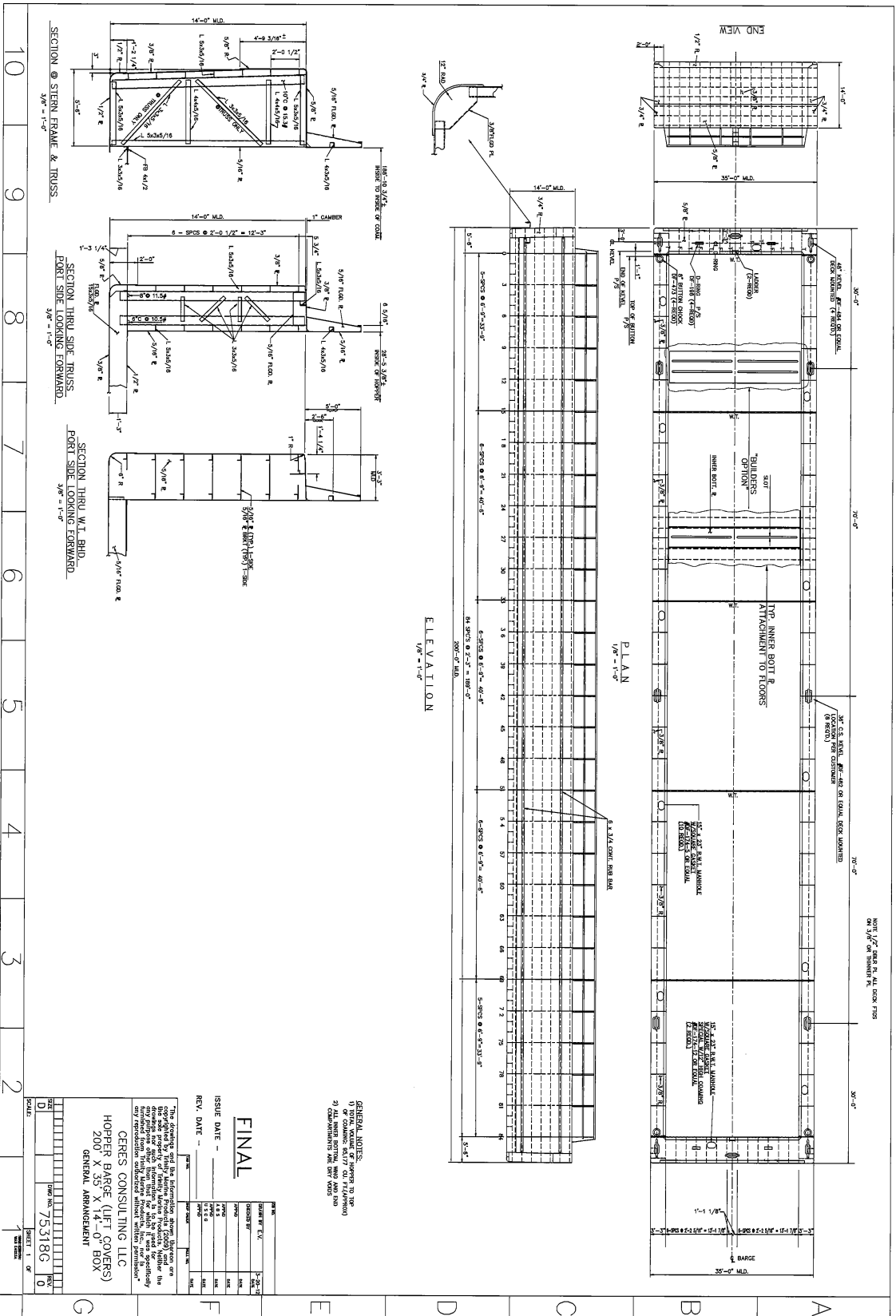
CERES BARGE LINE 

CERES BARGE LINE - CERES CONSULTING, LLC

3808 Cookson Road | East St Louis, Illinois 62201

618-271-7903 | pc@ceresbarge.com

ceresbarge.com



NOTE: 1/2" BARS IN ALL BOLT FLOORS
 AND 3/8" BARS IN ALL OTHER FLOORS

ELEVATION
 1/8" = 1'-0"

PLAN
 1/8" = 1'-0"

SECTION @ STERN FRAME & TRUSS
 3/8" = 1'-0"

SECTION THRU SIDE TRUSS
 PORT SIDE LOOKING FORWARD
 3/8" = 1'-0"

SECTION THRU W.T. BHD.
 PORT SIDE LOOKING FORWARD
 3/8" = 1'-0"

GENERAL NOTES:
 1) REFER TO DRAWING FOR ALL DIMENSIONS
 2) ALL DIMENSIONS UNLESS OTHERWISE SPECIFIED
 3) ALL DIMENSIONS ARE TO FACE UNLESS OTHERWISE SPECIFIED

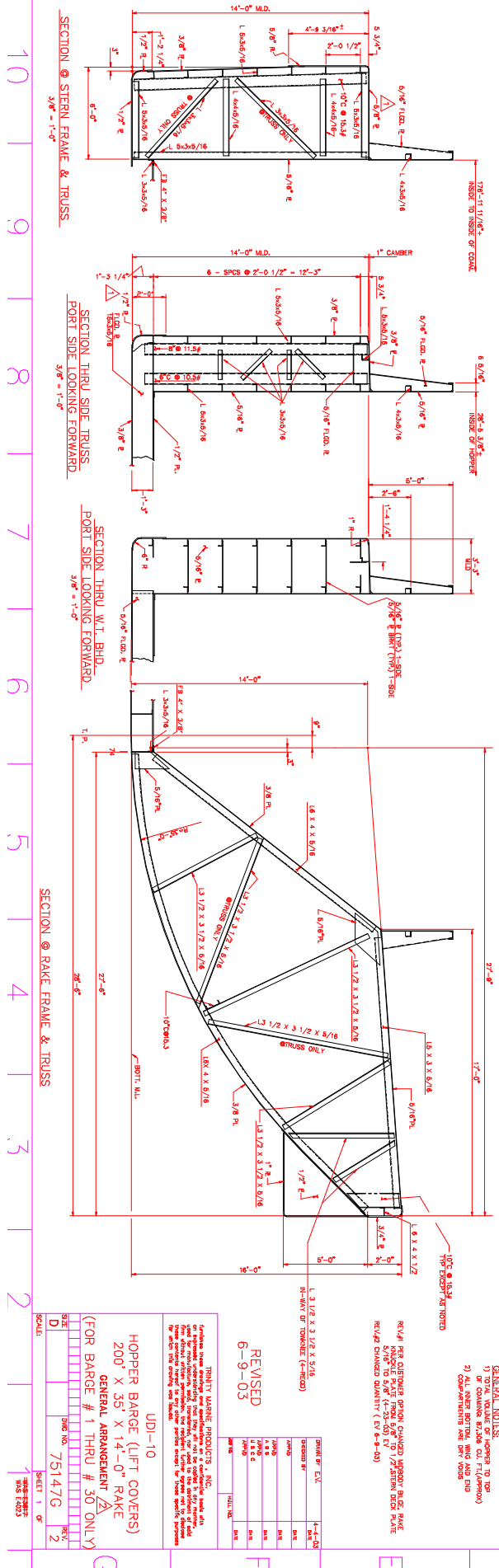
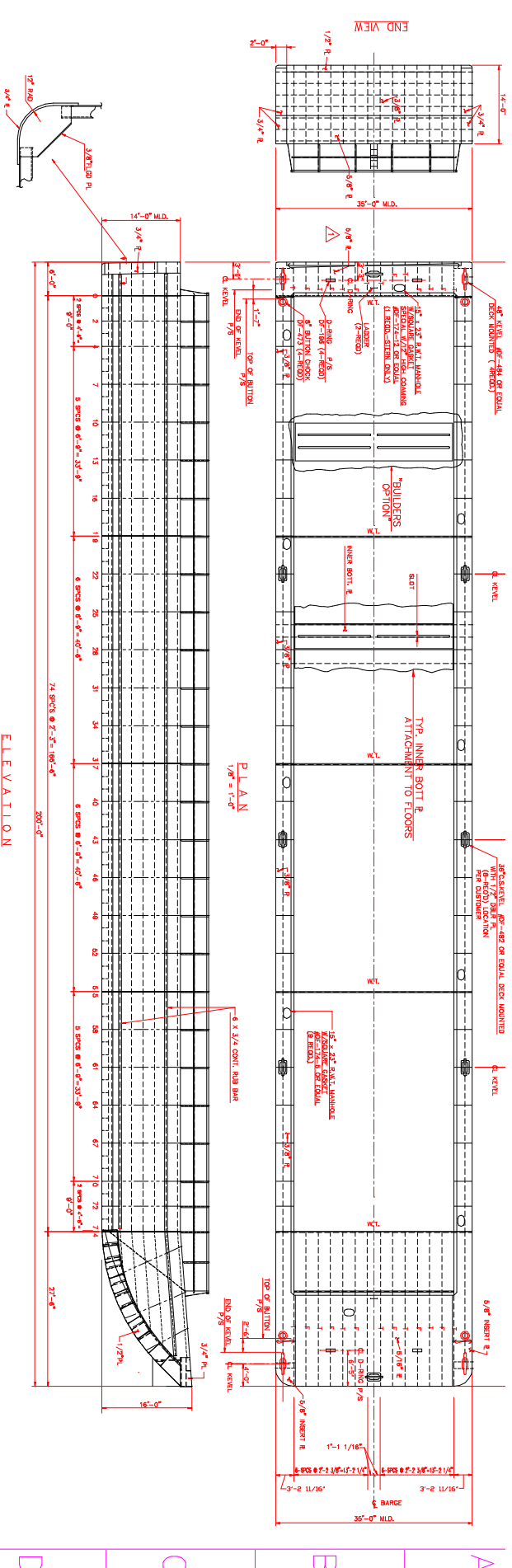
FINAL

ISSUE DATE -
 REV. DATE -

The drawings and the information shown hereon are the sole property of Ceres Consulting, LLC. No part of these drawings may be reproduced or transmitted in any form or by any means, electronic, mechanical, photocopying, recording, or by any information storage and retrieval system, without the prior written permission of Ceres Consulting, LLC.

CERES CONSULTING, LLC
 HOPPER BARGE (LIFT COVERS)
 200' X 35' X 14'-0" BOX
 GENERAL ARRANGEMENT

| | | | |
|--------------|--------|--------|---------|
| SCALE | DATE | BY | CHECKED |
| AS SHOWN | 7/5/18 | 75318G | 75318G |
| SHEET 1 OF 1 | | 75318G | |



GENERAL NOTES:
 1) ALL DIMENSIONS UNLESS OTHERWISE NOTED TO BE IN FEET AND INCHES.
 2) ALL INNER BOTTOM BARS AND BIRD
 COMPARTMENTS ARE SHOWN UNLESS NOTED OTHERWISE.

REVISIONS:
 REV#1 PER CUSTOMER FROM COVERED HOPPER BARGE RAKE FRAME
 5/16/10 TO 5/16/10 (REVISED)
 REV#2 DIMENSIONS QUANTITY (REV 6-9-10)

REVISIONS

| NO. | DATE | DESCRIPTION |
|-----|---------|---|
| 1 | 5/16/10 | PER CUSTOMER FROM COVERED HOPPER BARGE RAKE FRAME |
| 2 | 5/16/10 | TO 5/16/10 (REVISED) |
| 3 | 5/16/10 | DIMENSIONS QUANTITY (REV 6-9-10) |

UD1-10
 HOPPER BARGE (LIFT COVERS)
 200' X 35' X 14'-0" RAKE
 GENERAL ARRANGEMENT # 30 ONLY
 (FOR BARGE # 1 THRU # 30 ONLY)

SCALE: 1/8" = 1'-0"

DATE: 7/51/47G
 SHEET: 2 OF 2
 PROJECT: 75147G