



ENDEAVOR

200' x 35' x 10' ABS DECK BARGE

VESSEL DETAILS

| | |
|-----------------------|-----------------------|
| Year Built | 2014 |
| Flag/Port of Registry | USA / Morgan City, LA |
| Official Number | 1256083 |
| Class/Classification | ABS Load Line |
| GRT | 617 |
| Length Overall | 200' |
| Breadth | 35' |

| | |
|---------------------------------|----------------------|
| Depth | 10.5' |
| Light Ship Weight | 276.80 LT |
| Cargo Capacity at Max Load Line | 1222 LT |
| Deck Loading | 2000 lbs/square foot |
| Transverse Bulkhead | 5 |
| Longitudinal Bulkhead | 1 |
| No. Of Compartments | 12 |

Particulars given herein are entirely without warranty as to accuracy. Interested parties must satisfy themselves by inspection of the vessel.

CERES BARGE LINE 

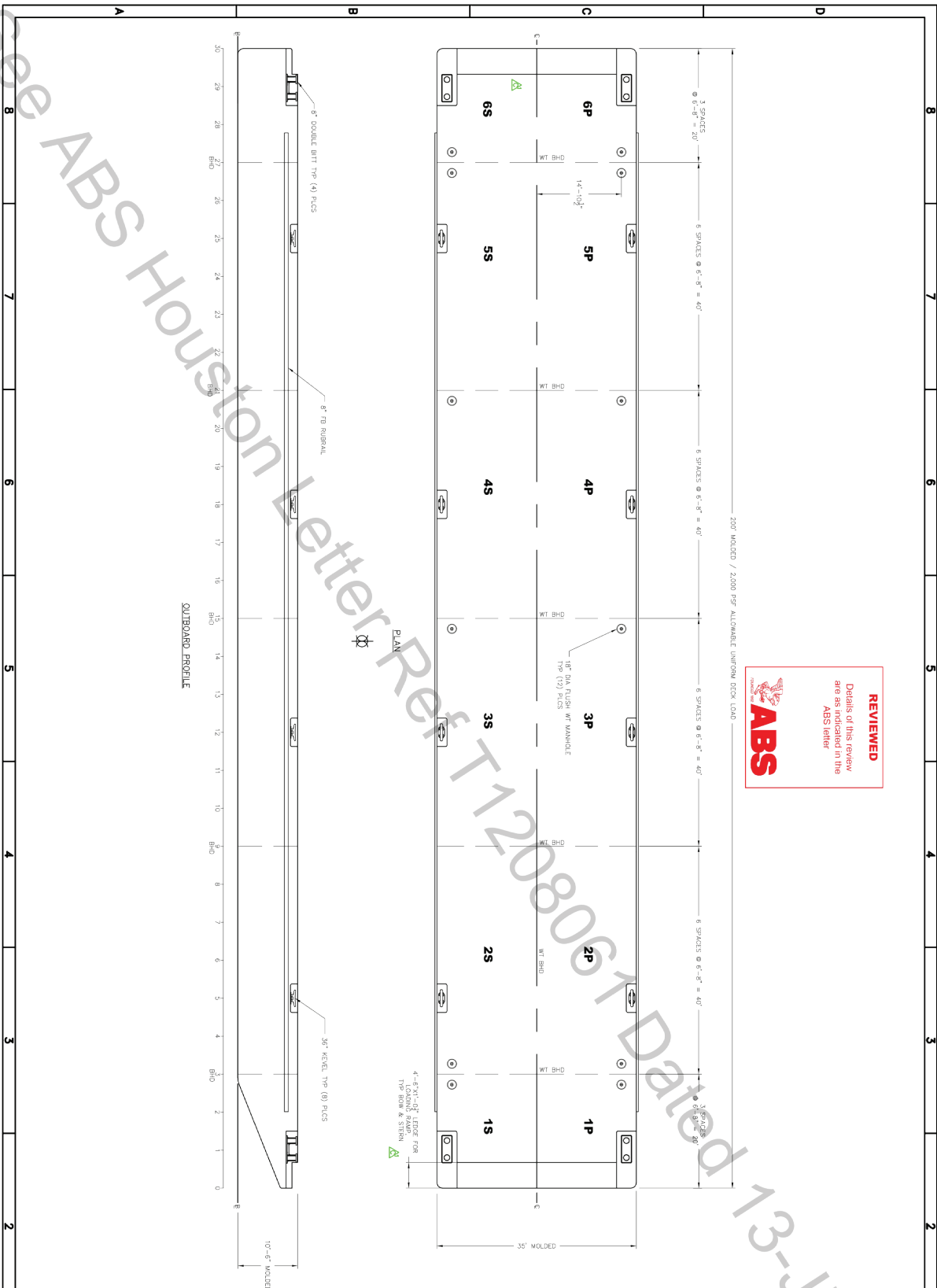
CERES BARGE LINE - CERES CONSULTING, LLC

3808 Cookson Road | East St Louis, Illinois 62201

618-271-7903 | pc@ceresbarge.com

ceresbarge.com

REVIEWED
 Details of this review
 are as indicated in the
 ABS letter

| SYMBOL | REVISIONS | EXCISE DATE |
|--------|-----------|-------------|
| 1 | 1 | |

GENERAL NOTES
 1. THIS DRAWING IS A GENERAL ARRANGEMENT DRAWING AND IS NOT TO BE USED FOR CONSTRUCTION OF THE VESSEL WITHOUT THE SUPERVISOR'S APPROVAL.
 2. ALL DIMENSIONS ARE IN INCHES UNLESS OTHERWISE SPECIFIED.
 3. ALL DIMENSIONS ARE TO FACE UNLESS OTHERWISE SPECIFIED.

REFERENCES

| NO. | DESCRIPTION | TYPE | DATE |
|-----|-------------|------|------|
| | | | |

RESERVATIONS

PRINCIPAL DIMENSIONS

| DESCRIPTION | SIZE |
|----------------------|--------------|
| OVERALL LENGTH | 35'-0" |
| OVERALL BEAM | 10'-6" |
| OVERALL DEPTH | 3'-0" |
| OVERALL WEIGHT | 15,000 LBS |
| OVERALL AREA | 369 SQ FT |
| OVERALL VOLUME | 11,700 CU FT |
| OVERALL SURFACE AREA | 1,200 SQ FT |

BRISTOL HARBOR GROUP
 3901 W. 11th Street, Houston, TX 77050
 TEL: (401) 253-4338 • FAX: (401) 253-2329
 WWW.BRISTOLHARBORGROUP.COM

GENERAL ARRANGEMENT

20' x 33' x 10.5' DECK BARGE, 2000 PIP

DATE: 7/18/11
 DRAWN: GJA
 CHECKED: GJA
 APPROVED: GJA

REVISION: 1
 REVISION: 2